

---

## Clevedon Retirement Village – Ilkley

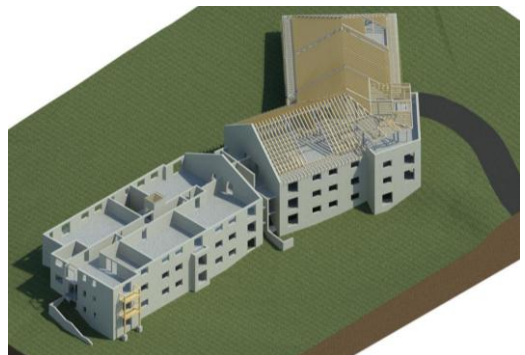
---



The project involves the refurbishment, re-build and alteration of existing stone buildings. The re-build elements of the works retained the existing stone and stone features of the original Victorian buildings which were dismantled and rebuilt around a new structural frame. The new buildings created site facilities such as a swimming pool, gymnasium and restaurant to sit alongside the new retirement flats. A contiguous piled wall was installed to construct a 1 to 2 storey basement beneath the main block for these facilities. The project also includes 4 new-build apartment blocks ranging between 2 and 4 storeys with up to 28 apartments in a block.

**Client:** Audley  
**Contractors:** Wates & Mansell  
**Architect:** Gaunt Francis

**MSJ Commission:**  
**Structure and Civils design and detailing**



Melia Smith & Jones were commissioned to design and detail the sub and superstructure elements of the buildings and the site wide drainage. This included an attenuation pond with a hydro-brake limiting surface water discharge to an existing watercourse.