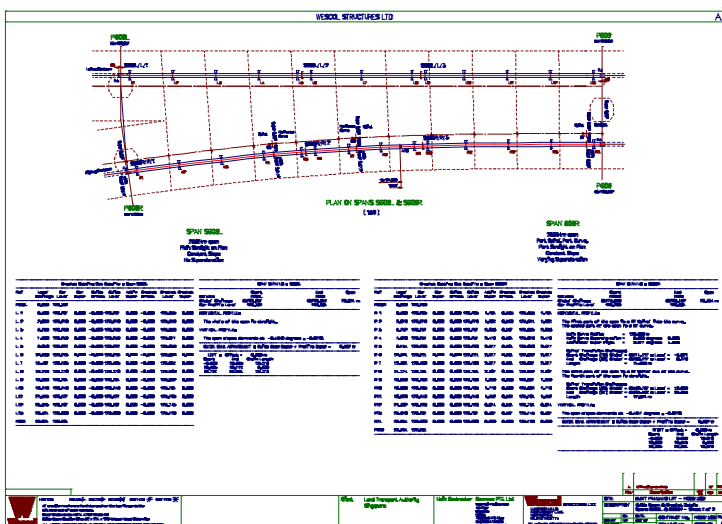


Light Rapid Transit System, Singapore



Overall Client:

Land Transport Authority, Singapore

Structural Steelwork Contractor:

Wescol Structures Ltd

MSJ Commission:

3D Geometry, Fabrication Drawings

Wescol Structures were commissioned by Gammon PTE to fabricate and install 16 km of guide beam for the Bukit Panjang Light Rapid Transit System.

Wescol commissioned MSJ to calculate the complex geometric shape and detail each individual member for bending and fabrication.

The member shapes included horizontal curves, vertical curves, transition spirals and progressively varying twists. In some cases an individual member would include a combination of all these geometric shapes.

MSJ developed a computer program to calculate the 3D geometry and present it in a form that enabled the individual beams to be accurately detailed for bending and fabrication.

Bending was carried out by Angle Ring who were able to introduce the complex combinations of shapes to the high degree of accuracy required by the specification.

The drawings produced by MSJ also detailed the positions and orientations of the brackets supporting the guide beams to allow accurate site erection.

MSJ produced in excess of 600 A1 detail drawings on this project employing rigorous checking procedures to satisfy the Client's Q.A. systems.

