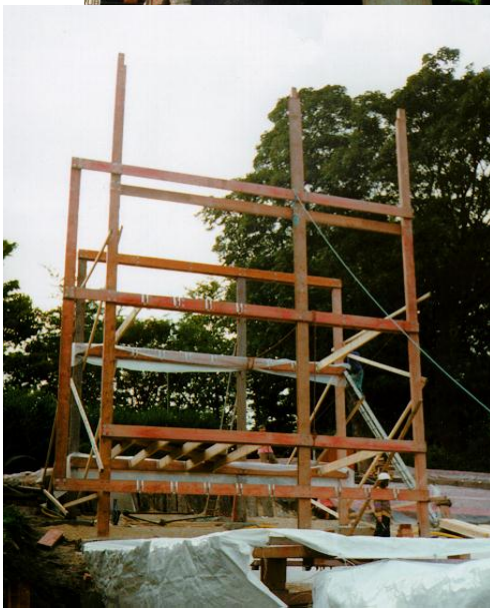

Self Build Project - Timber Frame Housing

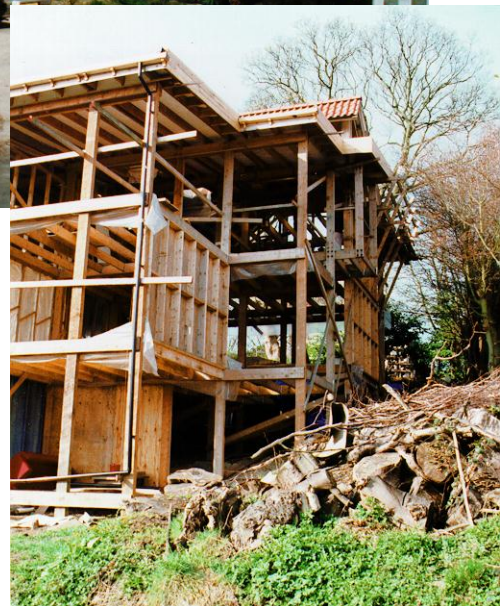
The Self Build Project comprised 3 families interested in creating an ecologically friendly environment in which to live. The group included 2 architects and a builder who between them put together a scheme to build 3 large 4/5 bedroom houses on a site in Leeds using timber from sustainable sources and other green materials. The scheme included water collection and waste treatment to alleviate the need for mains services other than gas and electricity. Melia Smith & Jones were involved from early in the design development and were responsible for the design of the superstructure and foundations



**Environmentally
Friendly**

**Renewable
Resources**

Low Energy



The site was steeply sloping and the houses, 3 storeys at the back and 2 storeys at the front, were designed with split level floors. The superstructure consisted of sway frames longitudinally which were braced laterally by the gable and party wall panels.

Simplicity of construction was paramount in all details. Built by the largely unskilled labour force of family and friends, the main frames were erected by the whole group with most of the follow up work undertaken by each family on their own house. The foundations consisted of simple mass concrete pads at the frame post positions.

The 3 houses which formed a terrace were separated structurally to reduce noise transmission. The front elevation consisted of white panelling and clay roof tiles to blend in with the adjacent housing. The rear elevation was more radical with horizontal timber boarding and moss roofs.